



## Mixue Menu 2026 With Prices, Calories & PDF Download

Do you want the latest Mixue menu 2026 with updated prices, calories, and halal details, but only finding old or outdated information online? Don't worry this page gives you the full official menu for all locations in one place.

We cover every category, including Mixue Ice Creams, Real Fruit Tea, Milk Tea, and Milk Foam drinks, so you can quickly find your favorite items. You can also download the menu as a PDF to save it on your phone and check anytime.

### Browse Mixue Menu Categories

Indonesia

Australia

Singapore

Malasiya

USA

### Mixue Indonesia Full Menu with Prices And Calories

#### Mixue Ice Creams

At Mixue, the ice cream menu includes soft cones, creamy sundaes, and sweet shakes at very affordable prices. These desserts are smooth, cold, and perfect for hot weather. A quick and tasty treat for everyone.

Visual Menu

Detailed Menu

8k Rp



Mixue Ice Cream

190 cal

16k Rp

Strawberry Mi-Sundae

320 cal

16k Rp

Mango Mi-Sundae

330 cal

16k Rp

Strawberry Mi- Shake

380 Cal

16k Rp

Mocha Mi-Shake

360 cal

16k Rp

Cookie Sundae

420 cal

16k Rp

Boba Sundae

450 cal

22k Rp



Creamy Mango Boba

470 cal

16k Rp

Coffee Smoothies

310 cal

13k Rp



Early Grey Ice Cream Tea

290 cal

13k Rp



Jasmine Ice Cream Tea

280 cal

### Mixue Real Fruit Tea

At Mixue, Real Fruit Tea drinks are made with fresh tea, ice, and fruity flavors for a cool and refreshing taste. They feel light, less creamy, and lower in calories than milk drinks. These teas are perfect for Indonesia's warm days when you want something fresh and thirst-quenching.

Visual Menu

Detailed Menu

10k Rp



Fresh Squeezed Lemonade

140 cal

12k Rp



Lemon Jasmine Tea

160 cal

16k Rp



Peach Early Grey Tea

200 cal

20k Rp



Passion Fruit Jasmine Tea

220 cal

22k Rp



Hawaiian Fruit Tea

240 cal

12k Rp



Lemon Early Grey Tea

150 cal

### Mixue Milk Tea

Mixue Milk Tea blends smooth tea with creamy milk and fun toppings like pearls, jelly, and red beans. The texture is rich, sweet, and filling, making every sip feel like a treat. It's the best choice if you enjoy classic bubble tea flavors with a creamy taste.

Visual Menu

Detailed Menu



Brown Sugar Pearl Milk Tea

M L

19k Rp | 460 cal



Supreme Mixed Milk Tea

M L

19k Rp | 480 cal



Oats Milk Tea

M L

\$3.80 | 340 cal



Coconut Jelly Milk Tea

M L

\$3.80 | 330 cal



Red Bean Milk Tea

M L

19k Rp | 420 cal



Milk Tea with 2 Toppings

M L

19k Rp | 450 cal

## Mixue Australia Full Menu with Prices And Calories

### Mixue Ice Creams

At Mixue, the ice cream menu offers smooth soft-serve cones, chocolate sundaes, and fruity shakes at pocket-friendly prices. Each dessert is creamy, cold, and refreshing. Perfect for hot Australian weather and quick sweet cravings.

Visual Menu

Detailed Menu

2.00\$



Mixue Ice Cream

190 cal

3.60\$



Brown Sugar Pearl Sundae

440 cal

3.60\$



Chocolate Sundae

360 cal

3.60\$



Mango Shake-Shake

380 Cal

3.60\$



Strawberry Shake-Shake

370 cal

6.00\$



Ice cream Grape

340 cal

3.60\$



Cocoa Cookie Sundae

420 cal

3.60\$

Mango Sundae

330 cal

3.60\$



Strawberry Sundae

320 cal

### Mixue Real Fruit Tea

These fruit teas are light, fresh, and made with tea, ice, and juicy fruit flavors. They are not too sweet and feel clean and refreshing. A great choice if you want something cool and low in calories.

Visual Menu

Detailed Menu

\$4.60



Strawberry Bobo

320 cal

\$5.00



Strawberry Pomelo Taro

210 cal

\$5.00



Mango Pomelo Taro

220 cal

\$4.60



Orange Mango

200 cal

\$3.60



\$4.60



\$4.00





Fresh Lemonade

140 cal



Taro Ball Grape

300 cal



Punched Fresh Orange

170 cal

### Mixue Milk Tea

Milk teas are rich and creamy with popular toppings like pearls, jelly, and taro balls. The texture is smooth and filling, making every sip satisfying. Best for anyone who loves classic bubble tea flavors.

Visual Menu

Detailed Menu

\$4.60



Pearl Milk Tea

340 cal

\$4.60



Taro Ball Milk Tea

360 cal

\$5.00



Three Gems Milk Tea

480 cal

\$4.60

Red Bean Milk Tea

420 cal

### Mixue Milk Foams

At Mixue, Milk Foam drinks come with a soft, creamy foam layer on top of fresh tea or fruit flavors. The taste is smooth, slightly sweet, and lightly salty, giving every sip a rich and balanced feel. These drinks are perfect if you want something creamy but lighter than regular milk tea.

Visual Menu

Detailed Menu

\$6.00



Milk Foam Grape

300 cal

\$5.00



Milk Foam Strawberry

310 cal

\$4.60



Milk Foam Oolong Tea

260 cal

## Mixue Ice Creams

At Mixue, the ice cream menu features soft-serve cones, creamy sundaes, and sweet shakes at affordable prices. Each dessert is smooth, cold, and refreshing. Perfect for a quick treat while shopping or walking around the city.

Visual Menu

Detailed Menu

1 S\$



Signature Kingcone

190 cal

3.5 S\$



Strawberry Sundae

320 cal

3.5 S\$



Mango Sundae

330 cal

3.5 S\$



Mango Shake-Shake

380 Cal

3.5 S\$



Strawberry Shake-Shake

370 cal

3.5 S\$



Brown Sugar Pearl Sundae

440 cal

## Mixue Real Fruit Tea

Real Fruit Teas are light, fresh, and made with tea, ice, and fruity flavors. They are less creamy and lower in calories, so they feel clean and easy to drink. A great choice when you want something cool and refreshing in Singapore's warm weather.

Visual Menu

Detailed Menu

4.90 S\$



Punched Fresh Orange

170 cal

4.60 S\$

Orange Mango

200 cal

4.90 S\$

Mango Pomelo Taro

220 cal

3.50 S\$

Strawberry Pomelo Taro

210 cal

4.60 S\$



Strawberry Bobo

320 cal

3.60 S\$



Fresh Lemonade

140 cal

3.00 S\$

Lemon Earl Grey Tea

150 cal

3.50 S\$



Passion Fruit Mango

230 cal

4.60 S\$



Taro Ball Grape

300 cal

3.50 S\$

Full Cup Passion Fruit

180 cal

4.90 S\$



Kiwi Oolong Tea

190 cal

3.00 S\$

Snow King Earl Grey

280 cal

### Mixue Milk Tea

Milk Tea drinks are rich and creamy with popular toppings like pearls, jelly, and taro balls. The taste is sweet, smooth, and filling in every sip. Perfect for bubble tea lovers who want a classic and satisfying drink

Visual Menu

Detailed Menu

3.50 S\$



Cheese Bobo Milk Tea

460 cal

3.00 S\$



Pearl Milk Tea

340 cal

3.00 S\$



Coconut Jelly Milk Tea

330 cal

3.00 S\$



Taro Milk Tea

360 cal

3.00 S\$



Mixue

3.50 S\$



Mixue



Red Bean Milk Tea

420 cal



Three Gems Milk Tea

480 cal

### Mixue Cheese Tea

At Mixue, Cheese Tea drinks are topped with a thick and creamy cheese foam that adds a sweet and slightly salty flavor. The mix of fresh tea and smooth foam creates a rich but refreshing taste in every sip. It's a perfect choice if you want something creamy and different from regular milk tea.

Visual Menu

Detailed Menu

3.00 \$\$



Cheese Tea

260 cal

5.00 \$\$



Cheese Strawberry

340 cal

5.00 \$\$



Cheese Grape Smoothies

390 cal

## Mixue Malaysia Full Menu with Prices And Calories

### Mixue Ice Creams

At Mixue, the ice cream menu offers smooth soft-serve cones, creamy sundaes, and sweet shakes at very affordable prices. Each dessert is cold, light, and perfect for hot days. A quick and tasty treat for kids, families, and students.

Visual Menu

Detailed Menu

2 RM



Signature Kingcone

190 cal

6 RM

Chocolate Lucky Sundae

340 cal

6 RM

Boba Sundae

420 cal

6 RM

Strawberry Lucky Sundae

330 cal

5 RM

6 RM

5 RM

6 RM

Early Grey Ice Cream Tea

300 cal

Creamy Mango Boba

430 cal

Mango Mi-Sundae

320 cal

Cookie Sundae

410 cal

5 RM

Peach Mi-Shake

370 cal

### Mixue Real Fruit Tea

Real Fruit Teas are made with fresh tea, ice, and fruity flavors for a clean and refreshing taste. These drinks feel lighter and less creamy than milk options. Great if you want something cool, fresh, and lower in calories.

Visual Menu

Detailed Menu

3 RM



Fresh Lemonade

140 cal

4 RM



Lemon Jasmine Tea

150 cal

6 RM



Passion Fruit Bubble Tea

260 cal

6 RM



Peach Jasmine Tea

180 cal

6 RM



4 RM



5 RM



Peach Black Tea

170 cal

Lemon Black Tea

150 cal

Kiwi Jasmine Tea

190 cal

### Mixue Milk Tea

Milk Tea drinks are rich, smooth, and creamy with fun toppings like pearls, jelly, and brown sugar. Every sip feels sweet and filling like a dessert. Perfect for bubble tea lovers who want a more satisfying drink.

Visual Menu

Detailed Menu



Brown Sugar Pearl Milk Tea

M L

5.5 RM | 500 cal



Pearl Milk Tea

M L

5 RM | 360 cal

Supreme Mixed Milk Tea

M

7 RM | 520 cal

Coconut Jelly Milk Tea

M L

5.5 RM | 340 cal



O-coco Milk Tea

M

6 RM | 350 cal

Strawberry Creamy Drink

M

4.5 RM | 390 cal



Toffee Hazelnut Milk Tea

M

5.5 RM | 410 cal

Twin Topping Milk Tea

M L

5.5 RM | 480 cal

### Mixue Coffee

The coffee menu includes simple lattes, mocha, and iced blends for a quick energy boost. The flavor is mild, creamy, and easy to enjoy anytime. A good choice when you want coffee that is tasty and budget friendly.

Visual Menu

Detailed Menu

5.5 RM

5.5 RM

5.5 RM



Ice Cream Latte

330 cal

Ice Cream Mocha

380 cal

Toffee Hazelnut Latte

410 cal

## Mixue Usa Full Menu with Prices And Calories

### Mixue Sundaes

At Mixue, the sundae menu features creamy soft serve topped with chocolate, strawberry, mango, and cookie flavors. Each cup is cold, rich, and perfect as a quick dessert. A sweet and affordable treat for kids, families, and ice cream lovers.

Visual Menu

Detailed Menu

\$1.19



Mixue Soft Serve

190 cal

\$3.49



Super Strawberry Sundae

340 cal

\$3.49



Super Chocolate Sundae

420 cal

\$3.49



Super Mango Sundae

330 cal

\$3.49



Super Cookies Sundae

450 cal

\$1.69



Matcha Soft Serve

210 cal

### Floats & Teas

Floats and teas mix fresh brewed tea or lemonade with smooth soft-serve for a fun and refreshing drink. The taste is light, cool, and slightly creamy at the same time. Great for hot days when you want both a drink and a dessert in one cup.

Visual Menu

Detailed Menu

\$1.99

\$1.99

\$2.99

\$2.99



Mixue Fresh Lemonade

140 cal



Jasmine Tea

10 cal



Black Float

260 cal

Jasmine Float

270 cal

\$2.99



Oolong Float

260 cal

\$4.49



Orange Punch

220 cal

### Mixue Milk Teas

Milk Teas are creamy, sweet, and filling with popular toppings like pearls, jelly, and taro balls. The texture is smooth and rich, making every sip feel satisfying. Perfect for bubble tea fans who enjoy classic and dessert-style drinks.

Visual Menu

Detailed Menu

\$4.49



Passion Blast

230 cal

\$4.99



Strawberry Jasmine Tea

180 cal

\$4.99



Grape with Taro Balls

330 cal

\$4.99



Coconut Mango with Taro

340 cal

\$3.49





### Peach Oolong Tea

160 cal

## Mixue Fruit Teas

Fruit Teas are made with tea, ice, and bright fruit flavors for a fresh and juicy taste. These drinks feel lighter and lower in calories than milk options. A great choice if you want something cool, refreshing, and easy to drink.

Visual Menu

Detailed Menu

\$4.49



Matcha Latte

340 cal

\$3.99



Taro Ball Milk Tea

390 cal

\$3.99



Twin Topping Milk Tea

480 cal

\$3.99



Coconut Jelly Milk Tea

350 cal

\$4.99



Super Triple Milk Tea

520 cal

## Mixue USA Coffee

Item Name	Price	Calories (approx)
Dark Roast	\$2.49	5 cal
Coconut Latte	\$3.49	210 cal
Jasmine Latte	\$3.49	190 cal
Affogato Latte	\$3.49	320 cal

## Mixue Pronunciation

The name Mixue comes from two Chinese words. "Mi" means honey-sweet and "Xue" means snow. Together, the name means "sweet snow," which perfectly matches their soft ice cream and cold drinks.

Many people pronounce it wrong like “miksiu” or “misiu,” but the correct way to say it is “Mee-shoo-ay.” The brand is also known as the “Snow King,” inspired by its cute mascot.

## Founder Story

Mixue was founded by Zhang Hongchao, who started the business with a simple goal to sell tasty ice cream at low prices so everyone can afford it.

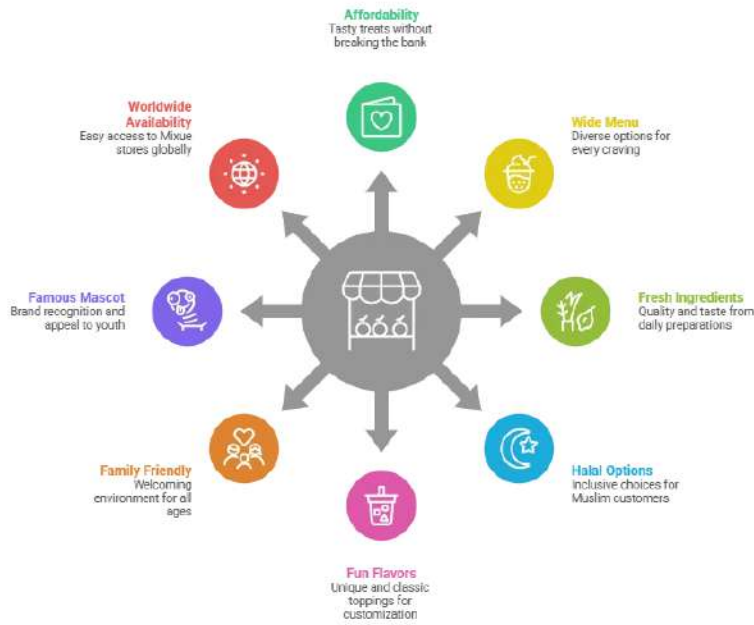
## Mixue Halal Certification

Mixue takes halal standards seriously in countries with large Muslim communities. Many outlets in Indonesia, Malaysia, and parts of Singapore offer halal-certified drinks and desserts so customers can enjoy their food with confidence.

In Malaysia, halal approval is managed by JAKIM, while Indonesia follows certification rules from LPPOM MUI. Franchise stores must follow strict checks, and all ingredients are carefully reviewed to meet halal requirements.



### Mixue Advantages



## FAQs

Q: What is Mixue?



Q: Can I download the Mixue menu as a PDF?



Q: Is this menu official and updated?



Q: What is the most popular Mixue item?



Q: Does Mixue have dairy-free options?





All menu information is for reference only. This site is not the official Mixue website. Check local stores for latest prices.

#### QUICK LINKS

[Terms & Conditions](#)

[Disclaimer](#)

[Privacy Policy](#)

[Contact Us](#)

[About](#)

#### FOLLOW US

